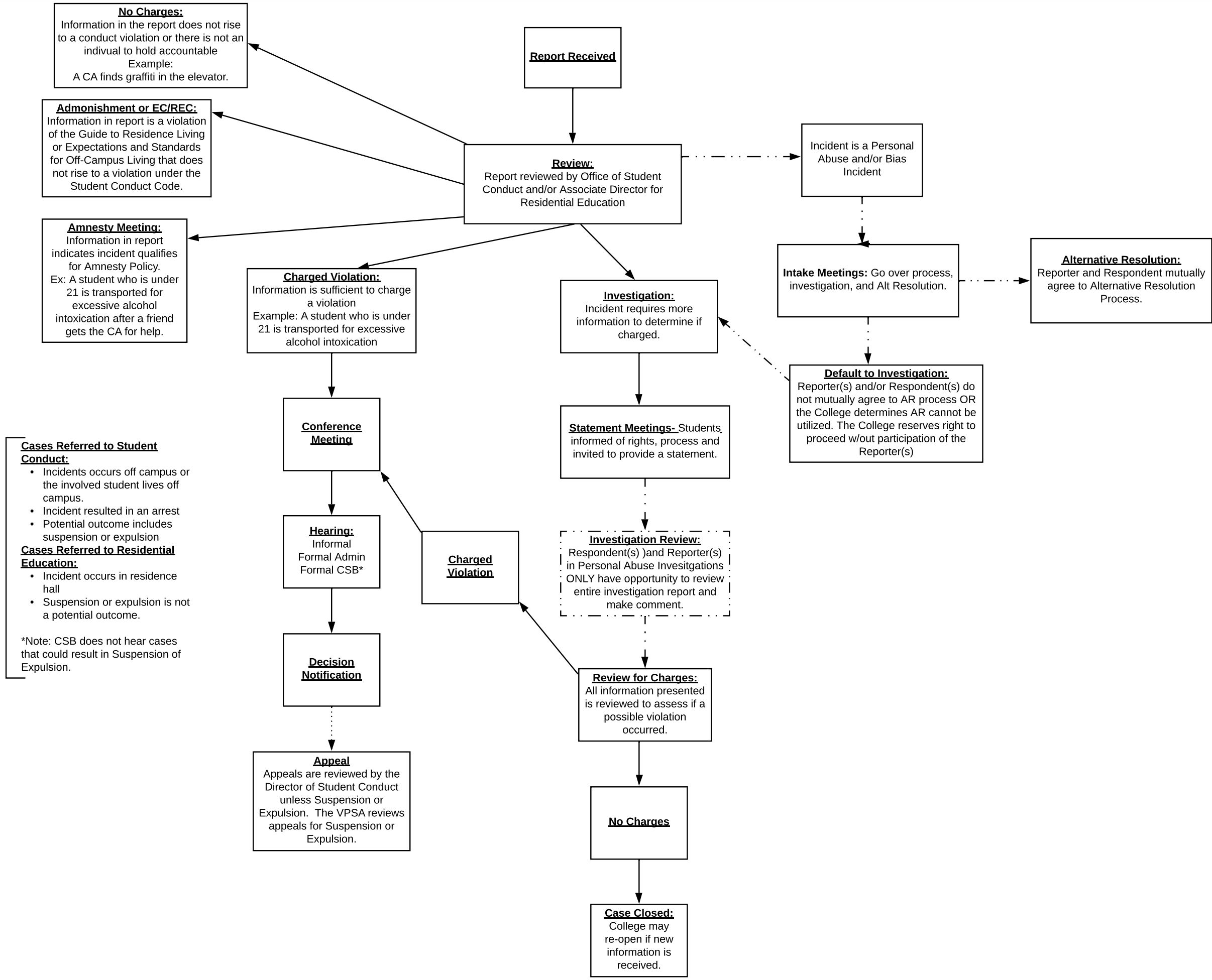


Student Conduct Process



Cases Referred to Student Conduct:

- Incidents occurs off campus or the involved student lives off campus.
- Incident resulted in an arrest
- Potential outcome includes suspension or expulsion

Cases Referred to Residential Education:

- Incident occurs in residence hall
- Suspension or expulsion is not a potential outcome.

*Note: CSB does not hear cases that could result in Suspension or Expulsion.